



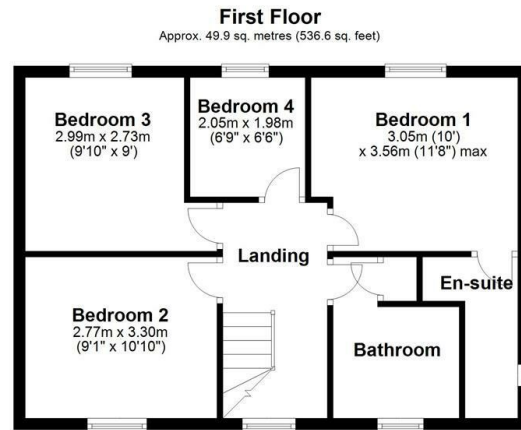
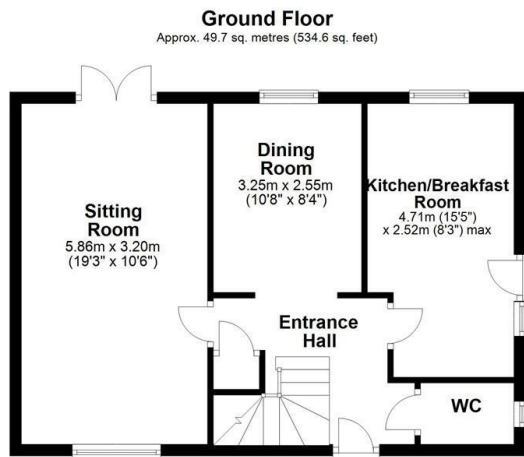
JAMIE WARNER
— ESTATE AGENTS —



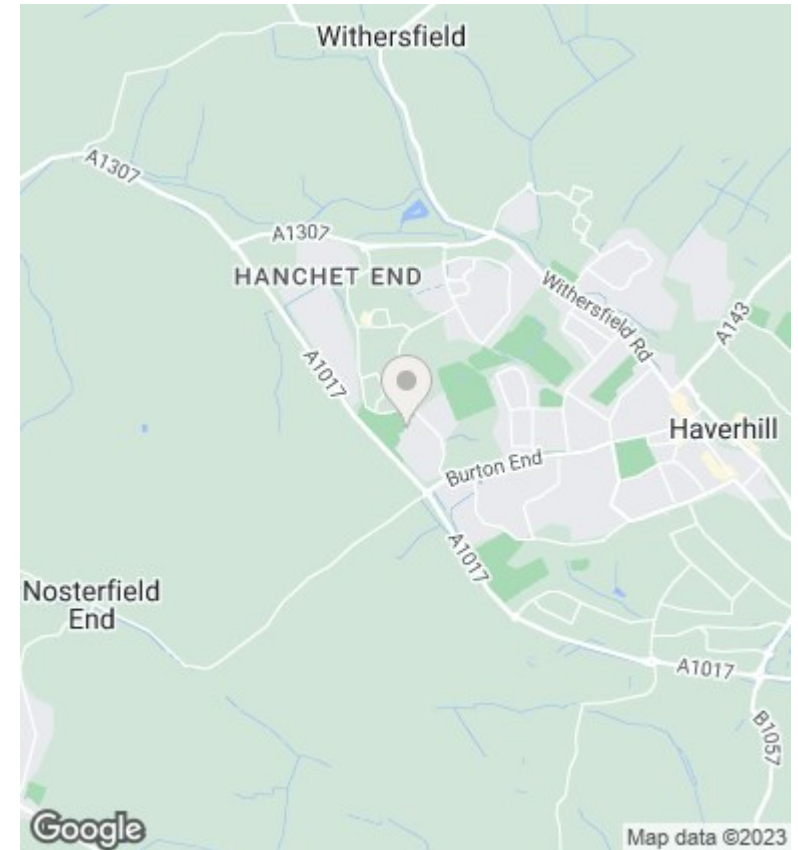
4 Bramley Road, Haverhill, CB9 9PR

Guide Price £390,000

- Four Bedrooms
- En Suite To Main Bedroom
- Overlooking Green Area
- Two Reception Rooms
- Generous Rear Garden
- Garage & Driveway
- Kitchen/Breakfast Room
- Edge Of Development
- Cambridge Side Of Town



Total area: approx. 99.5 sq. metres (1071.2 sq. feet)



Directions

Viewings

Viewings by arrangement only. Call 01440 712221 to make an appointment.

Council Tax Band

B

EPC Rating:

D

Energy Efficiency Rating		Current	Potential
<i>Very energy efficient - lower running costs</i>			
(92 plus)	A		85
(81-91)	B		
(69-80)	C		
(55-68)	D	67	
(39-54)	E		
(21-38)	F		
(1-20)	G		
<i>Not energy efficient - higher running costs</i>			
England & Wales		EU Directive 2002/91/EC	